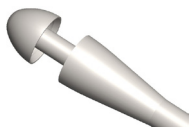


## *Circular Punch, gear type*

*Smooth transmission of force*



### **Circular Punch, gear type:**

- 235066FXF 65° upturned, Ø 3.5 mm  
WL 18 cm, with flushing connector
- 235076FXF 65° upturned, Ø 4.5 mm,  
WL 18 cm, with flushing connector
- 235036FXF straight, Ø 3.5 mm  
WL 18 cm, with flushing connector
- 235046FXF straight, Ø 4.5 mm  
WL 18 cm, with flushing connector

- **Ergonomic and closed design**
- **Effective gear transmission**
- **Accurate action**
- **Internal cleaning through an integrated luer-lock connection**
- **Particularly dirt-repellent design**